

Connect with  
**Social  
Values**

*A book of Social Studies*

by  
**F.A. Khan**  
M.A. M.Ed.



**3**

**Evershine  Publishers**

Soni House, WZ-348, Nangal Raya, New Delhi - 110046  
Phones : 28111758, 28113958, Fax : 28112353



*Published by*

**EVERSHINE PUBLISHERS**

Soni House, WZ-348, Nangal Raya, New Delhi - 110046

Phones : 28111758, 28113958, Fax : 28112353

© All rights reserved with the Publishers.

The contents, transparencies, illustrations and layout of this book are the sole property of **Evershine Publishers**. New Delhi and are copyright. Any reproduction in whole or in part in any form what-so-ever is strictly prohibited.

# Preface

---

---

---

---

---

**Connect with Social Value – A Book of Social Studies** is a carefully graded series for classes 1 to 5. It conforms to the **Continuous and Comprehensive Evaluation (CCE)** scheme introduced by the Central Board of Secondary Education. The series is also useful to other educational boards.

As we know that today's child is tomorrow's citizen, So he/she must be made to realize what he/she receives from the society and what he/she is expected to contribute to the society. This is the main aim of understanding the subject of social studies. The main features of the series are :

- ★ **Easy and lucid** language in a child-friendly manner.
- ★ Relevant and colourful **illustrations, photographs and maps** to make learning process easy.
- ★ **Word Meanings** to enhance vocabulary.
- ★ **To Recall** at the end of each chapter for recap.
- ★ **Summative Assessments** to assess and evaluate the children on regular basis. Include exercises such as **MCQs, True-False, Matching** and **Long Answer Questions**.
- ★ **Formative Assessments** include **Activities** and **Projects**.
- ★ **Life Skills** and **Speaking Skills** to help learners to move towards a holistic development.
- ★ **H.O.T.S.** to test the learner's thinking skills.
- ★ **Map Practice** included to hone the mappings skills.
- ★ Test papers in the form of **Formative Assessment** (four F.A.) and **Summative Assessments** (two S.A.).

The series has been developed with great care, for effective teaching and learning in the classroom and beyond.

– Authors

# ***CONTENTS***

## **Unit - 1 : Our Earth**

- |    |                      |    |
|----|----------------------|----|
| 1. | The Earth - Our Home | 05 |
| 2. | Knowing the Earth    | 10 |

## **Unit - 2 : Land and People**

- |    |                                 |           |
|----|---------------------------------|-----------|
| 3. | Our Motherland - India          | 16        |
| 4. | States and Union Territories    | 22        |
|    | <b>Formative Assessment - 1</b> | <b>27</b> |
| 5. | Our Food                        | 28        |
| 6. | Our Dresses                     | 34        |
| 7. | Our Festivals                   | 39        |

## **Unit - 3 : The Way We Live**

- |     |                                 |           |
|-----|---------------------------------|-----------|
| 8.  | Working For Living              | 48        |
|     | <b>Formative Assessment - 2</b> | <b>55</b> |
|     | <b>Summative Assessment - 1</b> | <b>56</b> |
| 9.  | Travel Time                     | 58        |
| 10. | Sending and Receiving Messages  | 64        |
| 11. | People Who Help Us              | 69        |
| 12. | Local Governing Bodies          | 75        |
|     | <b>Formative Assessment - 3</b> | <b>80</b> |

## **Unit - 4 : Our Metropolitan Cities**

- |     |                     |     |
|-----|---------------------|-----|
| 13. | Delhi               | 81  |
| 14. | Mumbai              | 88  |
| 15. | Kolkata             | 94  |
| 16. | Chennai             | 100 |
| 17. | Other Indian Cities | 105 |

## **Unit - 5 : The Story of Early Humans**

- |     |                                 |            |
|-----|---------------------------------|------------|
| 18. | Early Humans                    | 111        |
|     | <b>Formative Assessment - 4</b> | <b>118</b> |
|     | <b>Summative Assessment - 2</b> | <b>119</b> |



## Unit - 1 : Our Earth

# The Earth - Our Home

If you look at the sky on a clear night, you will see the **sun**, the **moon** and the **stars**. They are called **heavenly bodies**.

There are also eight planets in the sky. They are **Mercury, Venus, Earth, Mars, Jupiter Saturn, Uranus** and **Neptune**. The sun and the eight planets form the **Solar System**.

The earth is home for all living beings. This is because:

- ★ The earth is surrounded by a layer of air called the **atmosphere**.
- ★ About three-fourth of the earth is covered by **water**.

Both air and water are essential for all living things.

### Looking Ahead

In this lesson :

- ★ Shape of the earth
- ★ Surface of the earth

### Know More

Until 2006, there were nine planets in the solar system. However, on 24 August 2006, Pluto was excluded from the family of the solar system.

## SHAPE OF THE EARTH

The earth is **round** in shape. It looks like a huge round ball.

Long ago, people thought that the earth was flat. They were afraid of going beyond a certain distance, fearing that they would fall off its edge!



About 500 years ago in 1519, a Portuguese sailor, **Ferdinand Magellan** started a long journey from Spain. He kept sailing

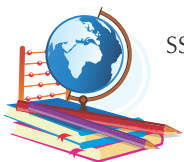
in only one direction. After three years, his ship returned to the same place from where he had started his journey. This proved that the earth is round like a ball and not flat as people earlier thought. Actually, the



Our Earth

Ferdinand Magellan

SST-3





Magellan's route around the earth

earth is round like an orange, slightly flat at the top and the bottom. These flat areas are called the **pole**. The two poles of the earth are the **North Pole** and the **South Pole**.

Many years later in 1969, American astronauts **Neil Armstrong** and **Edwin Aldrin** landed on the moon. They took many photographs of the earth from the moon. These photographs also show that the earth is round in shape.

The earth looks blue from space because it has more water than land. Therefore, the earth is also called the **blue planet** or **watery planet**.

### Know More

If you could put the earth on a big scale, it would weight about 600 million million million tonnes.

If you look out far from a high building, the land and sky seem to meet with each other. But in reality, they do not meet.

The place where the land

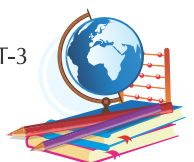
and the sky seem to meet is called the **horizon**. If we go closer to the horizon, it seems to move further away.



Neil Armstrong



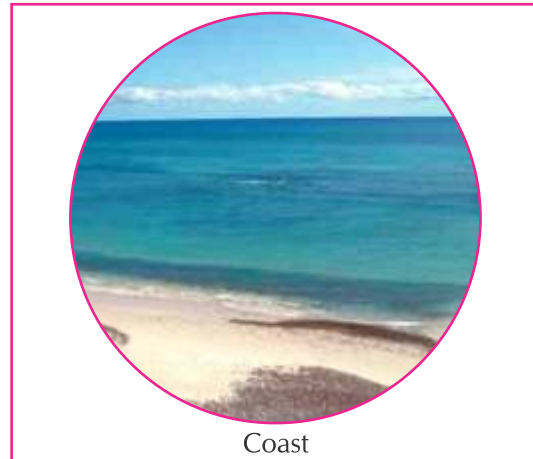
Edwin Aldrin



Have you ever been near a sea? The place where the land and the sea meet is called the **coast**. If we stand on the coast and face the sea, it seems that the water and the sky meet at a distance. This does not happen in reality.



Horizon



Coast

The earth has many physical features like **plains, mountains, hills, valleys, forests, deserts, rivers, lakes, waterfalls, seas and oceans**. The earth is our beautiful home. We should take care of it.



### WORD MEANINGS

- planets** : heavenly bodies which revolve around the sun  
**atmosphere** : the layer of the air that surrounds the earth  
**horizon** : the place where the land and the sky seem to meet



### LET US RECALL

- The earth is **round** in shape.
- The earth is made up of **land** and **water**.
- The earth is the only planet which has **life** on it.
- **Ferdinand Magellan** was the first to sail around the earth.
- The earth looks blue from space.

### TASKS FOR FA & SA

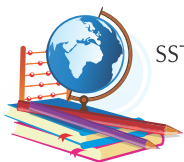
(Based on CCE)

### TESTING TIME

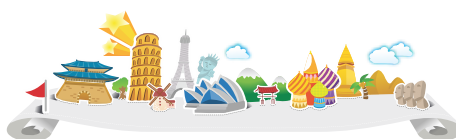
#### A. Tick (✓) the correct answer :

1. The first man to go around the world was :

- |                   |                       |                          |                       |
|-------------------|-----------------------|--------------------------|-----------------------|
| (a) Abel Tasman   | <input type="radio"/> | (b) Christopher Columbus | <input type="radio"/> |
| (c) Francis Drake | <input type="radio"/> | (d) Ferdinand Magellan   | <input type="radio"/> |



SST-3



2. The place where the land and the sky seem to meet is called the :
- (a) coast  (b) horizon   
 (c) shore  (d) space
3. Ferdinand Magellan belonged to :
- (a) Spain  (b) Portugal   
 (c) France  (d) Germany
4. Who was the first to land on the moon?
- (a) Yuri Gagarin  (b) Neil Armstrong   
 (c) Rakesh Sharma  (d) Kalpana Chawla

**B. Complete the words :**

1. Heavenly bodies that go around the sun \_P\_\_\_\_\_
2. The home of all living beings \_E\_\_\_\_\_
3. Flat areas at the top and bottom of the earth \_P\_\_\_\_\_
4. A thin layer of air around the earth \_A\_\_\_\_\_
5. The place where the land and the sea meet \_C\_\_\_\_\_

**C. Write True or False :**

1. Our earth is a planet. .....
2. The planets revolve around the earth. .....
3. There is more water than land on the earth. .....
4. Life exists on the earth because of air and water. .....
5. The land and the sky do not meet each other. .....

**D. Write the names of the eight planets in the solar system.**

1. .... 2. ....  
 3. .... 4. ....  
 5. .... 6. ....  
 7. .... 8. ....



**E. Answer the following questions.**

1. What makes the solar system?

.....

2. What is the shape of the earth?

.....

3. What are the North Pole and the South Pole?

.....

4. What makes the earth a suitable place for living beings?

.....

5. What is the coast?

.....

# ACTIVITIES AND PROJECTS

**TASKS FOR FA**

## 1. JUST FOR FUN

Read the clues and write the names of these Indian astronauts.



I became the first Indian to go into space.



I became the first Indian woman to go into space.



I became the second Indian woman to go into space.

Help Box	Sunita Williams	Rakesh Sharma	Kalpana Chawla
----------	-----------------	---------------	----------------

2. Make a model of the solar system using different sized colourful balls.

3. Visit a planetarium and gather information about heavenly bodies.

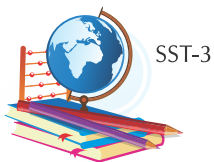
## LIFE SKILLS

Trees are necessary for good living conditions on the earth. Still people are cutting them continuously. How can this problem be solved? Write your opinion.

### H.O.T.S.

(High Order Thinking Skills)

Can you light a candle on the moon? Why and why not?



SST-3

